

TRADITIONAL HOME

March 2004

*Artful
decorating*

*with the
things you
love*

DESIGN EXCLUSIVE

the **BEST OF SEATTLE**

13 sublimely serene rooms
3 lovely gardens, 2 top designers
45 can't-miss shops & restaurants
27 of the freshest, finest foods

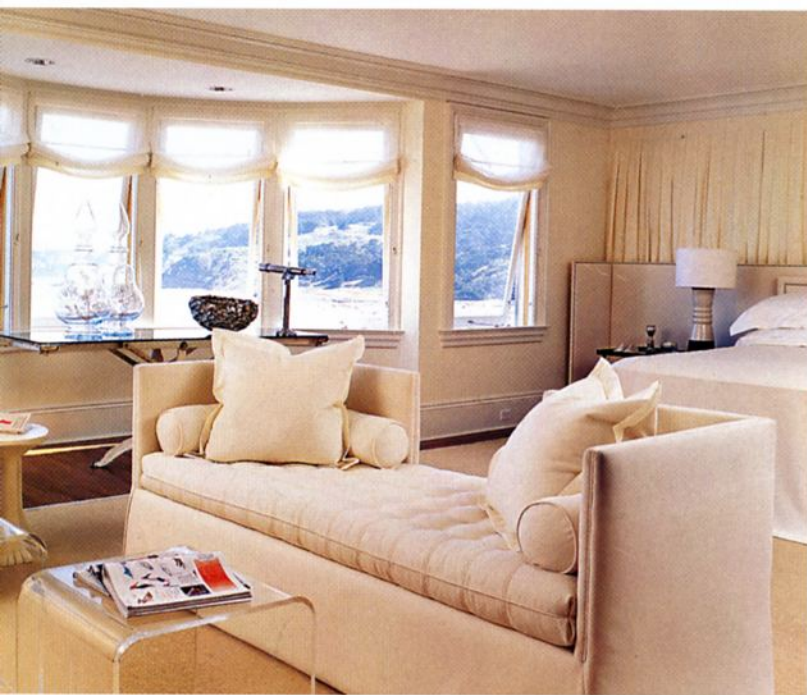
\$4.95 U.S. Display until February 24



Geoff De Sousa, San Francisco Decorator Showcase, frames the sea.

Visualizing an occupant passionate about glamour, fashion, and the sea, designer Geoff De Sousa created the epitome of sophistication in this master bedroom suite. The palette of soft creams and whites highlights the room's breathtaking view of San Francisco Bay and the Golden Gate Bridge.

"I wanted people to enter this space and be bowled over by the view before focusing on objects in the room," the designer says of the desired effect. ➤



female fantasy describes this connoisseur's collection of alluring shoes straight out of *Sex and the City*.





Get Cookin' on Your Dream Kitchen Today!

EXPO Design Center has the recipe.

Begin with Only the Finest Ingredients

Professional Designer

Project Management Team

Season the Mix to Your Taste

Finely Crafted Custom Cabinetry

Premium Brand Name Appliances

Rock Solid Countertops

Gorgeous Flooring
& Dramatic Backsplash Designs

Savor the Sweet Smell of Success

Quality Installation

EXPO
Design Center
A HOME DEPOT COMPANY



Albeit neutral, the palette doesn't sacrifice style. Each individual furnishing is a piece of sculpture. A contemporary sofa, backless in the center like a starlet's sexy gown, is upholstered in a fine saddle-stitched wool. An eye-catching pair of silvery chairs originally designed for a swanky bar located atop San Francisco's Fairmont Hotel sits just behind it. Plexiglas, fashioned into tables and a club chair with faux-fur cushions, makes a bold retro statement. A glass-top table in the window bay displays oversized apothecary jars that nod to the towers of the Golden Gate Bridge.

And while the rock-crystal candlesticks are a valuable vintage-1950s find, the real treasure reflected in the room's antiqued mirror and metallic-finish commode is the vista of San Francisco's famous bay and bridge.

In the sleeping area, swaths of silk, cashmere, and pleather (synthetic leather) elevate plain vanilla hues to unabashed luxury. The smooth silk on the bedcover puddles on the floor. The headboard and paneled screen are both covered in pleather, and the wall behind them is draped in shirred silk.

From low-heeled pumps to stilettos, each pair in a connoisseur's collection of alluring shoes has been photographed for reference, stored in a canvas shoebox, and meticulously stacked on custom shelves flanking the mirrored fireplace—a female fantasy right out of *Sex and the City*. The shoe collection is displayed with verve, set off by silk curtains and a metal floor lamp constructed of bicycle parts. ▶

Photographer: Michael Weschler

City editor: Carla Breer Howard

For more information, see sources on page 162.