

MARCH 2015

BRIDGE FOR DESIGN



THE INTERNATIONAL RESOURCE FOR INTERIOR DESIGNERS

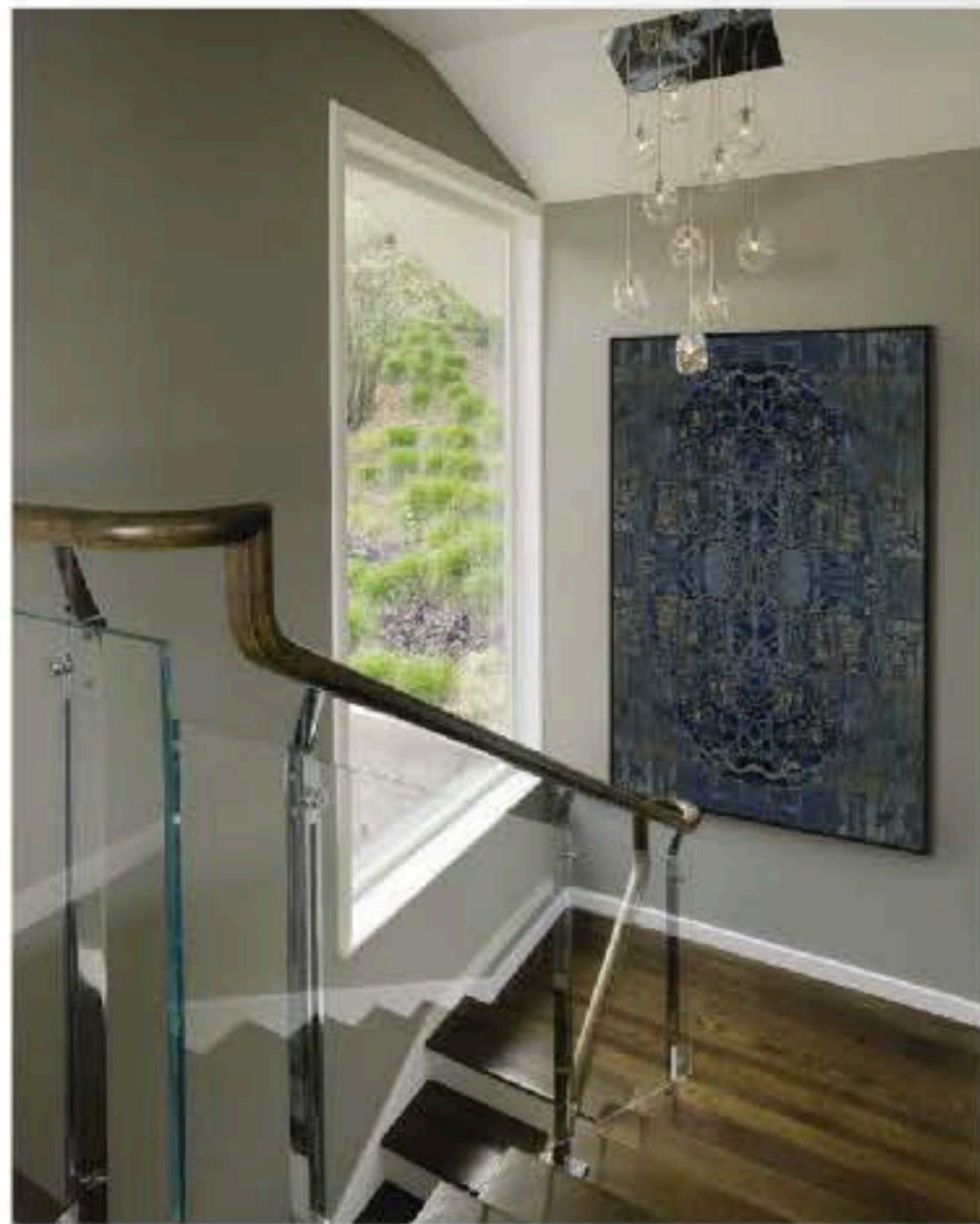


Inspired by

GEOFFREY DE SOUSA

The San Francisco designer fuses the past with the present to update a mid-century Mayhew classic

WORDS KENDRA BOUTELL | PHOTOGRAPHS MATTHEW MILLMAN



Interior design is in my DNA,' states Geoffrey De Sousa about his chosen vocation and avocation. In addition to opening his eponymous design firm twenty years ago, he co-founded De Sousa Hughes with business partner Erik Hughes. Located in San Francisco, the exquisitely edited 'to the trade' showroom reflects De Sousa's passion for textiles, furniture, and art.

For his projects, the Boston native deftly fuses the past with the present. 'I love history, and there's a real sense of tradition to my approach, but a house must also stand in the now,' he said. De Sousa understands the architectural nuances of buildings from another time. For a recent commission in San Francisco's Clarendon Heights district, he ushered a classic California Modern home into the 21st Century.

Designed in 1940 by modernist master Clarence William Whitehead Mayhew, the asymmetrical three-story residence features a reverse floor plan to maximize panoramic views of the bay area. Mayhew, known for site-specific structures, built his own iconic Piedmont home at the same time. To assist in the preservation of the house's Mid-Century character while adding current amenities, De Sousa enlisted architect Lorissa Kimm. The colleagues and friends, share an affinity for contemporary architecture.

To access the third floor's open plan living and dining rooms, Kimm installed an ethereal wood, glass, and chrome stairway. De Sousa played off of the space's dramatic fog-shrouded vistas with a warm colour palette of taupe and moody blues. Showcasing the views, Kimm replaced each window with new insulated units that respected Mayhew's original design.

For the living room, De Sousa featured a conversation group in front of a horizontal fireplace incorporated into a freestanding brick surround. He anchored the space with French designer Christian Liagre's clean lined sofa and coffee table on a textured carpet from Mark Nelson. In the dining room a hand blown cluster of pendants from John Pomp dance against the cityscape. Adjacent to the dining room lies the renovated kitchen while a tranquil den hides behind the fireplace.



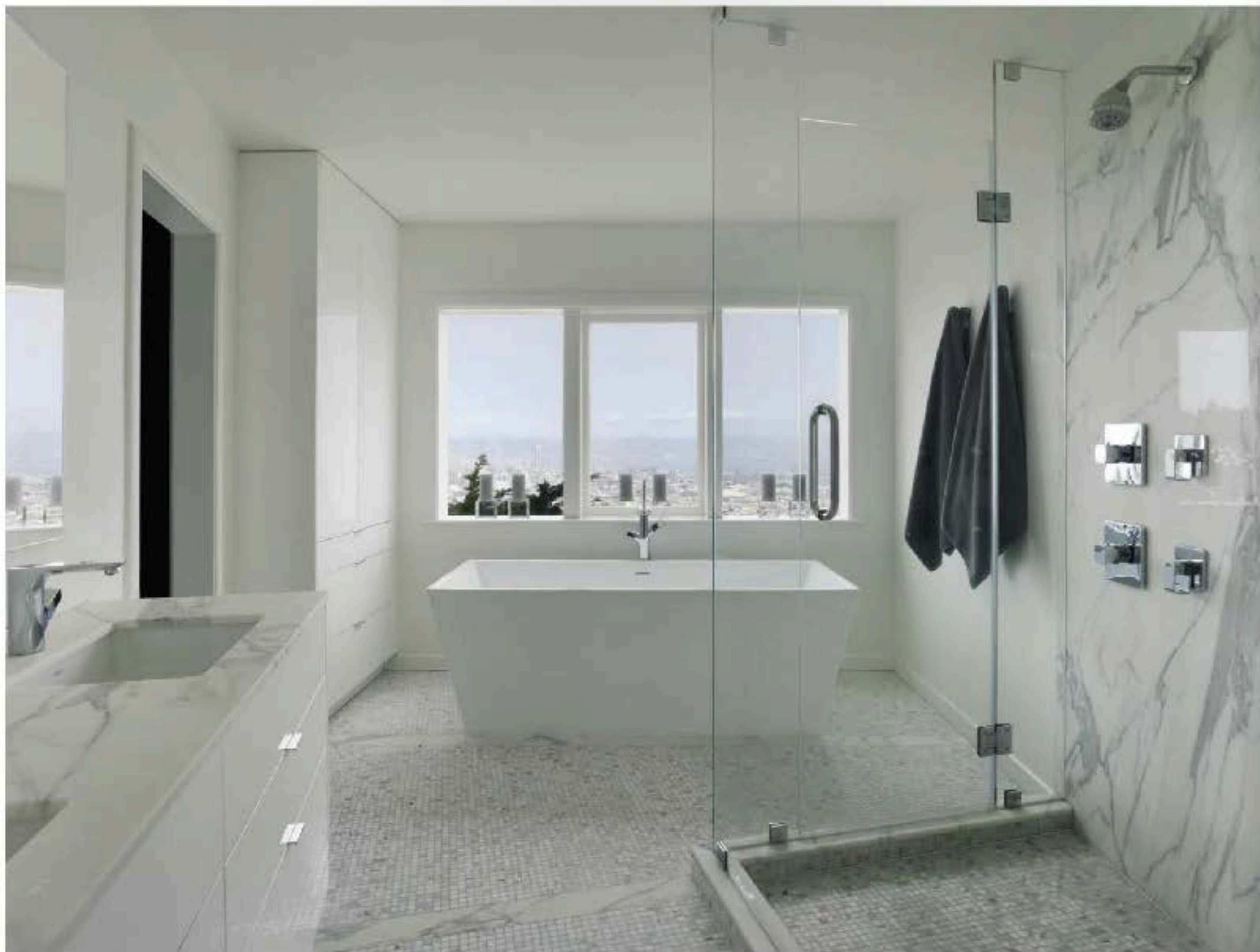
PREVIOUS PAGE: In the living room De Sousa paired the Palo Alto lounge chair from the De Sousa Hughes collection with a sleek tub chair from A. Rudin. An ironies accent table with blue cast resin top joins the tub chair

TOP LEFT: On the stairway landing De Sousa installed an archival pigment print on Innova paper from Chista in New York

BOTTOM LEFT: In the den, DeSousa placed one of Erik Hughes' furniture designs, the sleek Lakeside sofa in an amber Pollock textile accented by periwinkle pillows

RIGHT: On the terrace dark woven chairs upholstered in marigold fabric pair white ceramic garden stools for casual elegance





Descending back down the stairs, De Sousa created a cocooned master bedroom in misty blue greys. In contrast, a sunlit hued guest bedroom follows the master suite. Through the guest room's French doors lies the lyrical terrace with a round fire pit encircled by gracious seating. Green plantings and a living roof garden accent the earth colored exterior walls. Mayhew homes seamlessly blended the interior world with the outside. De Sousa reinterpreted his vision for the 21st century.

TOP: De Sousa utilised cool whites with silver accents for the ensuite master bathroom. A freestanding soaking tub with slightly angled edges allows the bather to enjoy the striking views

LEFT: Interior Designer Geoffrey De Sousa

Geoffrey De Sousa Interior Design
T: 001 415 626 6883
www.geoffreydesousa.com